

# Using ACU1000 as Card Lift Access Panel, Programming Multi-lift Group and Assignment to Cardholder

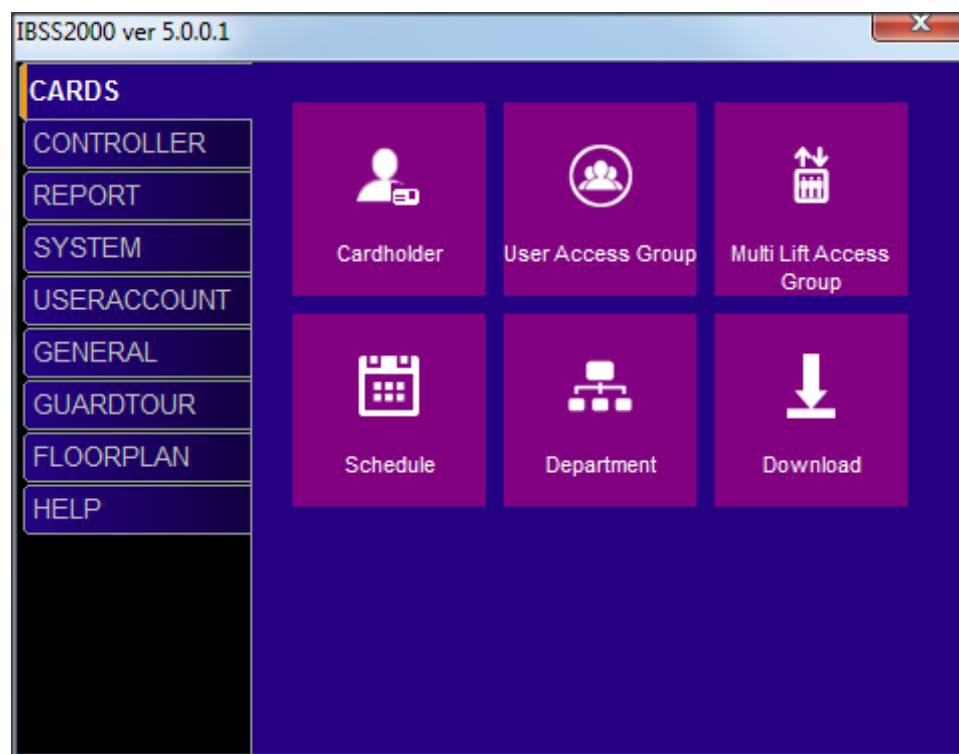
## Overview

Card Lift Access Panel add a layer of security to lift elevator by only respond to passenger with the right credential use the lift elevator.

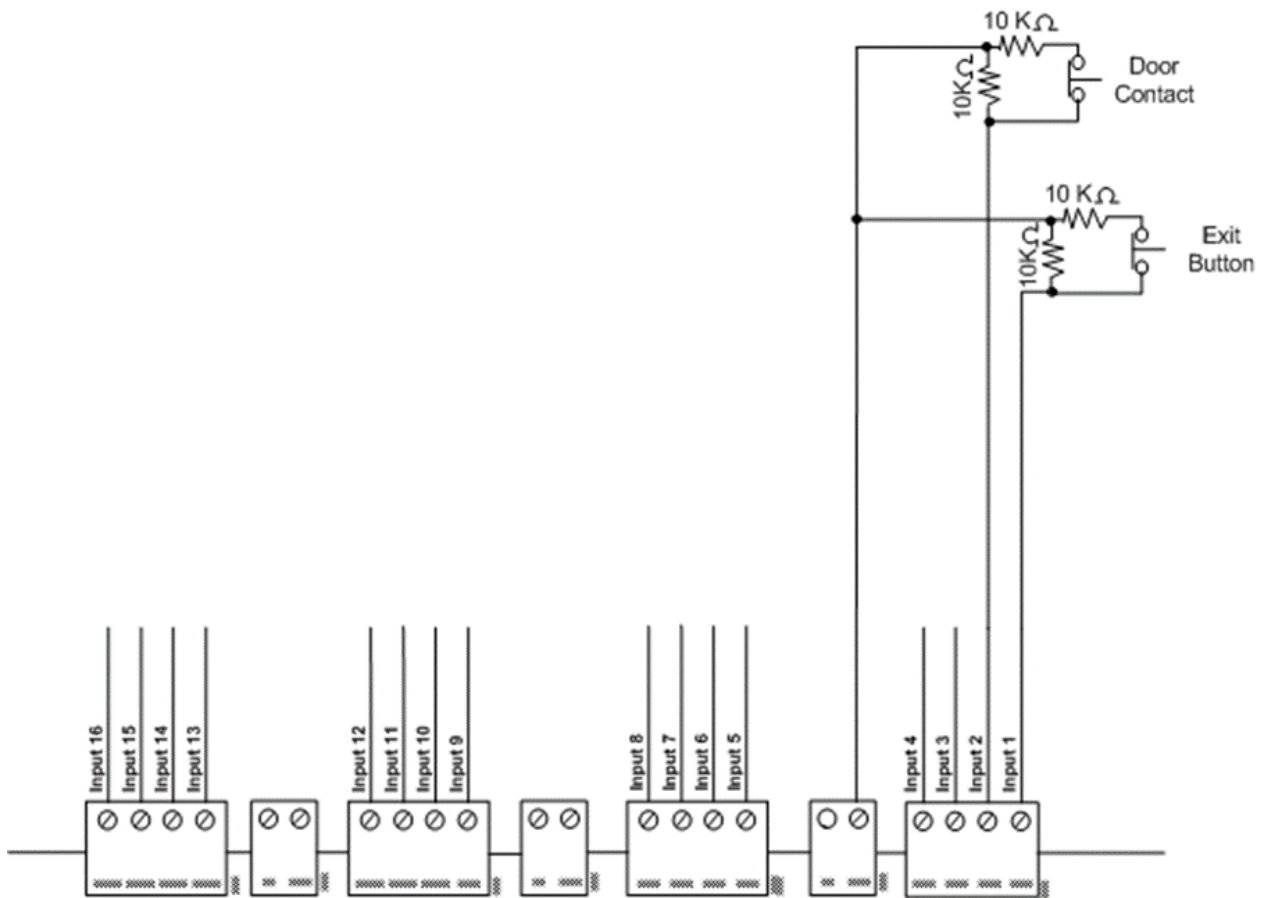
Card Lift Access Panel can be deploy in office building, commercial building, residential building, school, etc.

ACU1000 with add on board EM03 expand the lift level to up to 80.

A card reader will be installed in a lift card, where user will flash his / her card on it to gain access to the level button. Only the allowed level button will be lit. In the Lift Motor Room a rely on the EM03 board will be activate, it open a circuit hardwired to Lift panel, that corresponds to button press.



Multi Lift Access group configure ACU1000 output zone to be assign to a group (Multi Lift Access Group). 255 groups is support in a system.



Note: Setting of this switch applies to all analog 16 inputs. If there is any input requires line supervision, then ALL inputs have to operate in the same mode.

Each Multi Lift Access Group can be added with unlimited numbers of ACU1000

In Controller LIFT Output Map, there are 2 tab, each tab contain 48 Output zone.

