

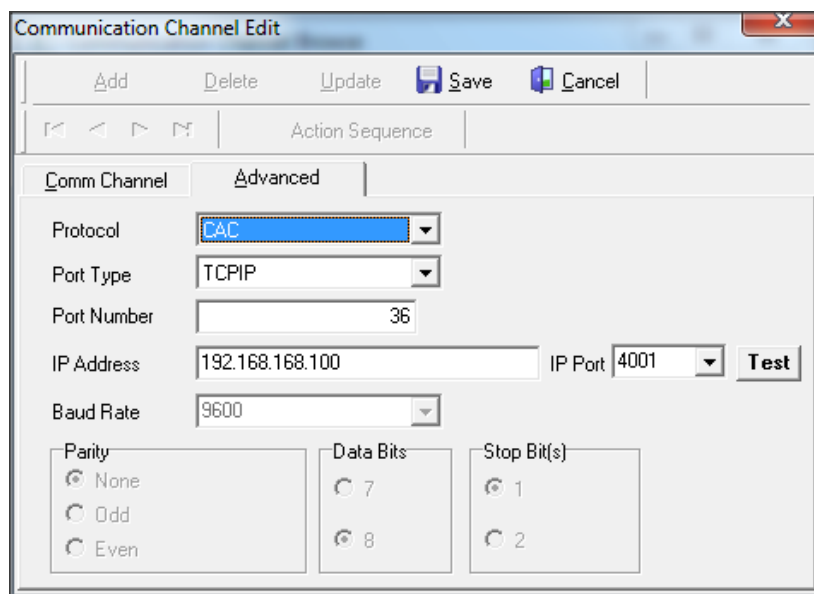
Program the ACU Controller for Basic Door Access

Overview

ACU controller configuration are done by software IBSS. The following in order are list of setting requires to setup ACU controller for basic door access.

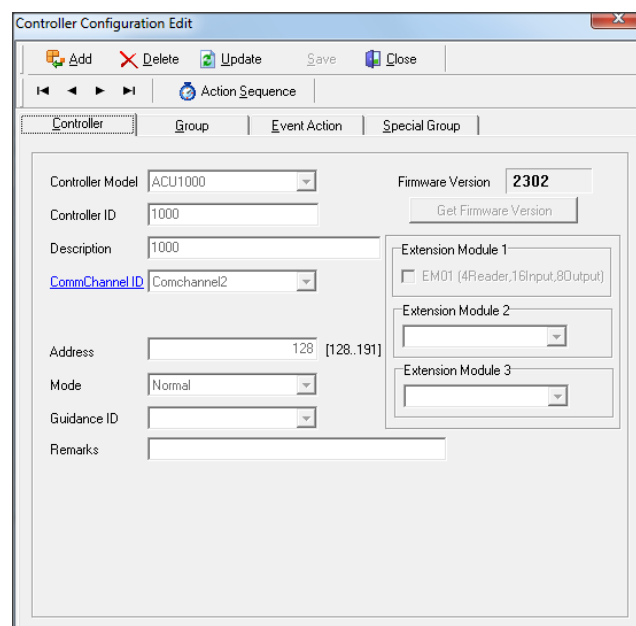
Setup Communications

Setup the commchannels for software to establish communication with controller. This is the first step to enable configuration and setting to be able to be sending to hardware controller.



The screenshot shows the 'Communication Channel Edit' dialog box. It has a toolbar with 'Add', 'Delete', 'Update', 'Save', and 'Cancel' buttons. Below the toolbar is an 'Action Sequence' section with navigation arrows. The main area is divided into two tabs: 'Comm Channel' and 'Advanced'. The 'Comm Channel' tab is active, showing the following settings: Protocol (CAC), Port Type (TCPIP), Port Number (36), IP Address (192.168.168.100), IP Port (4001), and Baud Rate (9600). There is a 'Test' button next to the IP Port dropdown. The 'Advanced' tab is also visible, showing settings for Parity (None), Data Bits (8), and Stop Bit(s) (1).

Setup Controller

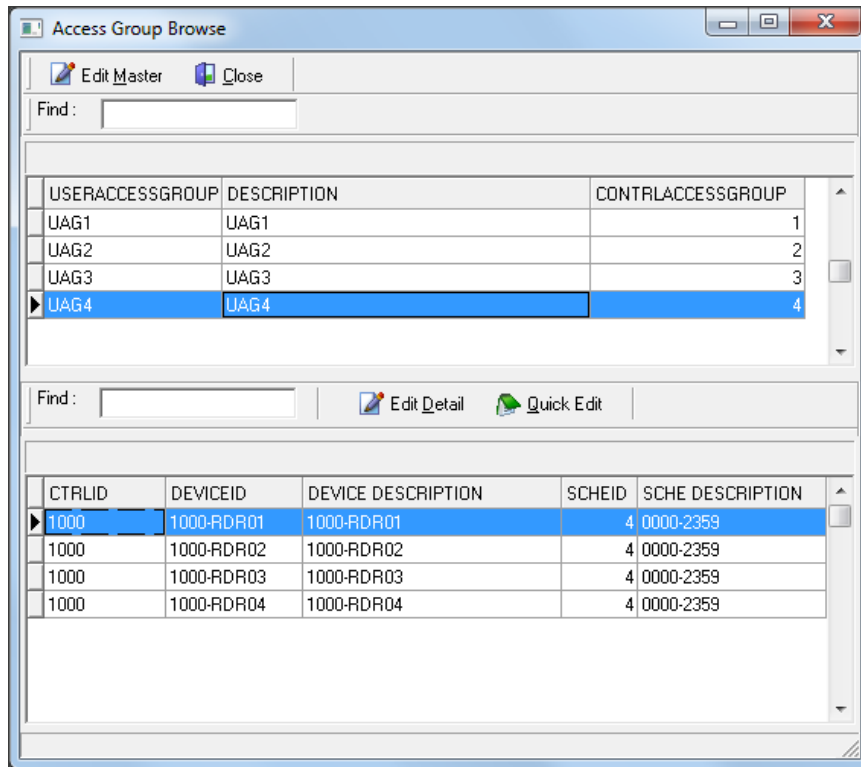


The screenshot shows the 'Controller Configuration Edit' dialog box. It has a toolbar with 'Add', 'Delete', 'Update', 'Save', and 'Close' buttons. Below the toolbar is an 'Action Sequence' section with navigation arrows. The main area is divided into four tabs: 'Controller', 'Group', 'Event Action', and 'Special Group'. The 'Controller' tab is active, showing the following settings: Controller Model (ACU1000), Firmware Version (2302), Controller ID (1000), Description (1000), CommChannel ID (Comchannel2), Address (128 [128..191]), Mode (Normal), Guidance ID, and Remarks. There are also three sections for Extension Modules: Extension Module 1 (EM01 (4Reader,16Input,80Output)), Extension Module 2, and Extension Module 3.

Setup controller model and point to the commchannel, the IBSS database will auto generate related devices, input and output associate with that controller. The devices or reader will be included in the User Access Group

Add User Access Group

User Access Group is a collection of readers with schedule. The group when sets and assign to Cardholder will allows the cardholders access to their designated reader location.



Add Cards with User Access Group

Add cardholder with minimum mandatory field to enable the card for access. User Access Group 1 must be selected with a group for granted access.

Add Card Holder Detail

Detail | Access | User Defined | ACU Series | ReadCardID | Debug | Finger Print

Cardholder ID: CARD01

Name: NAME01

IC/PP No:

CardID/CSN#: 12345678 Decimal: 4660 22136 Read Card

Department:

Mobile Number:

User Access Grp 1: UAG4

User Access Grp 2:

User Access Grp 3:

User Access Grp 4:

Status: Normal

Mode: Normal

Remark:

Card Format ID:

Enable AMR Mode: ☐

Save Download Close

Download Configuration to Controller

Download necessary config data to controller for basic card access functionality.

ACUSeries Download

Download Close More >>

ACU Controller

Controller Selection

☒ All Controller ☐ ControllerID:

ACU Configuration

☒ System Clock ☒ Card ID (optional criteria below):

☒ Reader Configuration:

☐ Input Configuration ☐ Delete Selected Card ID

☐ Output Configuration ☐ Invalidate All Expired Cards

☐ Group Configuration ☐ Holiday

☐ Event Action Configuration ☒ Access Schedule ☐ Multi Lift Group

☐ ID Format ☐ Site Code ☒ User Access Group:

Downloading:

☒ Normal Message ☐ Failed Message

Progress bar