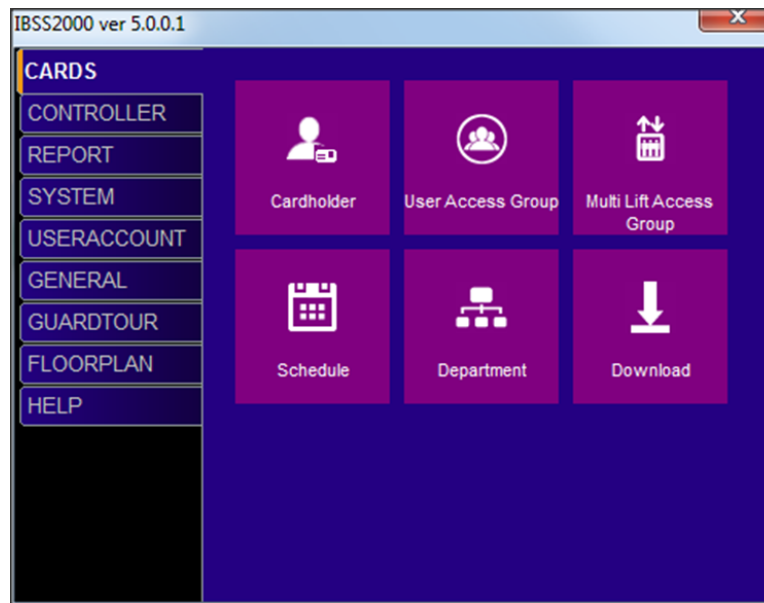


# Program the User Access Group

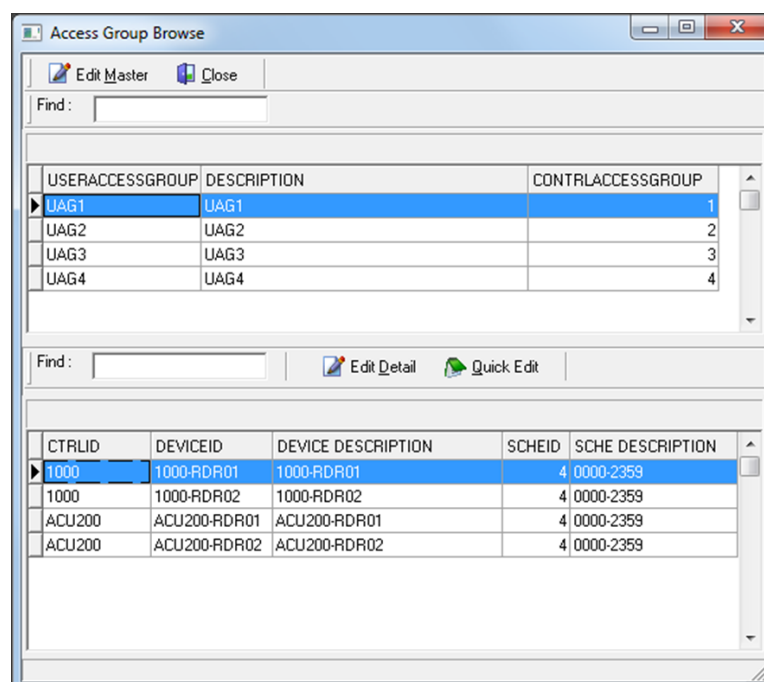
## Overview

User Access Group is a collection of Reader with Schedule. When programmed it is assign to Cards in database for access purpose. Depends on Controller model and it firmware support, total number of user access group varies. Minimum there are 255 groups up to 2048 groups.

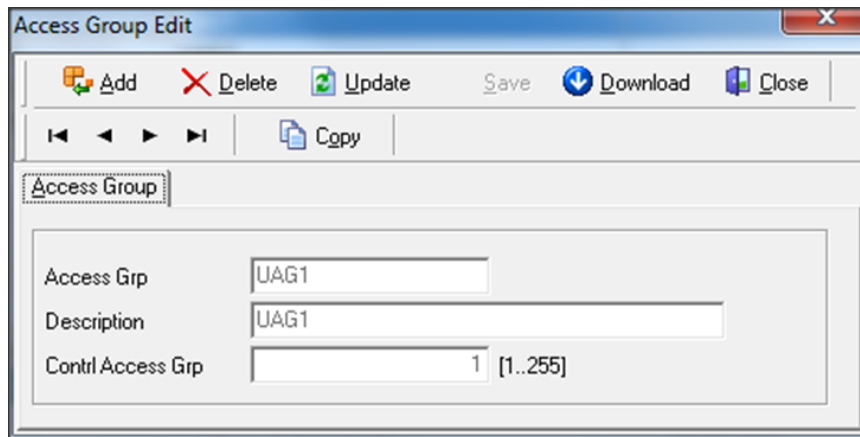
## IBSS2000 Menu



## Access Group Browse

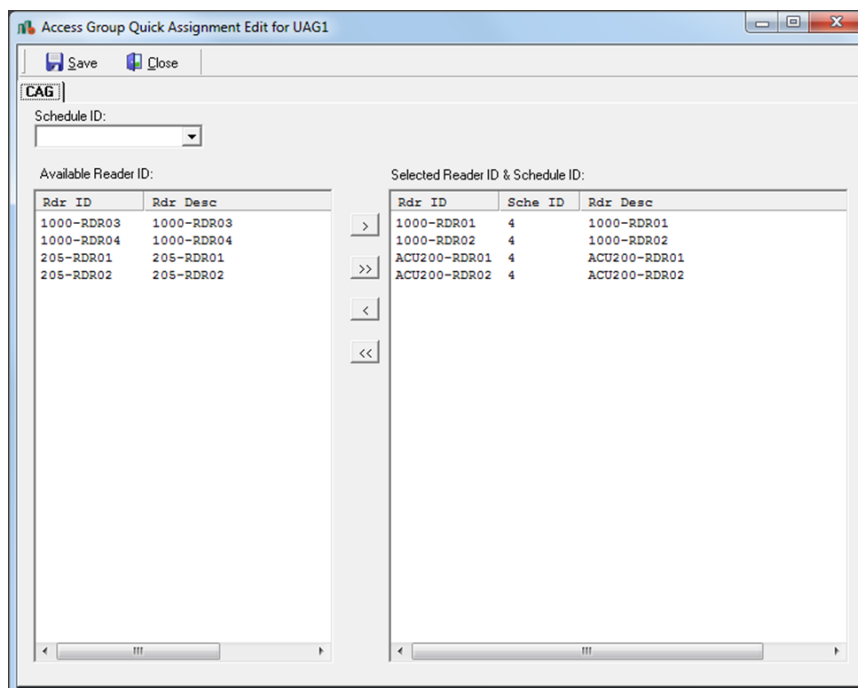


## Access Group Edit



The 'Access Group Edit' dialog box features a toolbar with icons for Add, Delete, Update, Save, Download, and Close. Below the toolbar is a 'Copy' button and a set of navigation arrows. The main area is titled 'Access Group' and contains three input fields: 'Access Grp' with the value 'UAG1', 'Description' with the value 'UAG1', and 'Contrl Access Grp' with the value '1' and a range indicator '[1..255]'.

## Access Quick Assignment Edit



The 'Access Group Quick Assignment Edit for UAG1' dialog box includes a 'Schedule ID' dropdown menu and a 'CAG' label. It displays two tables: 'Available Reader ID' and 'Selected Reader ID & Schedule ID'. The 'Available Reader ID' table lists four readers, and the 'Selected Reader ID & Schedule ID' table lists four selected readers, each with a 'Sche ID' of 4. Navigation buttons (>, >>, <, <<) are positioned between the two tables.

Rdr ID	Rdr Desc
1000-RDR03	1000-RDR03
1000-RDR04	1000-RDR04
205-RDR01	205-RDR01
205-RDR02	205-RDR02

Rdr ID	Sche ID	Rdr Desc
1000-RDR01	4	1000-RDR01
1000-RDR02	4	1000-RDR02
ACU200-RDR01	4	ACU200-RDR01
ACU200-RDR02	4	ACU200-RDR02