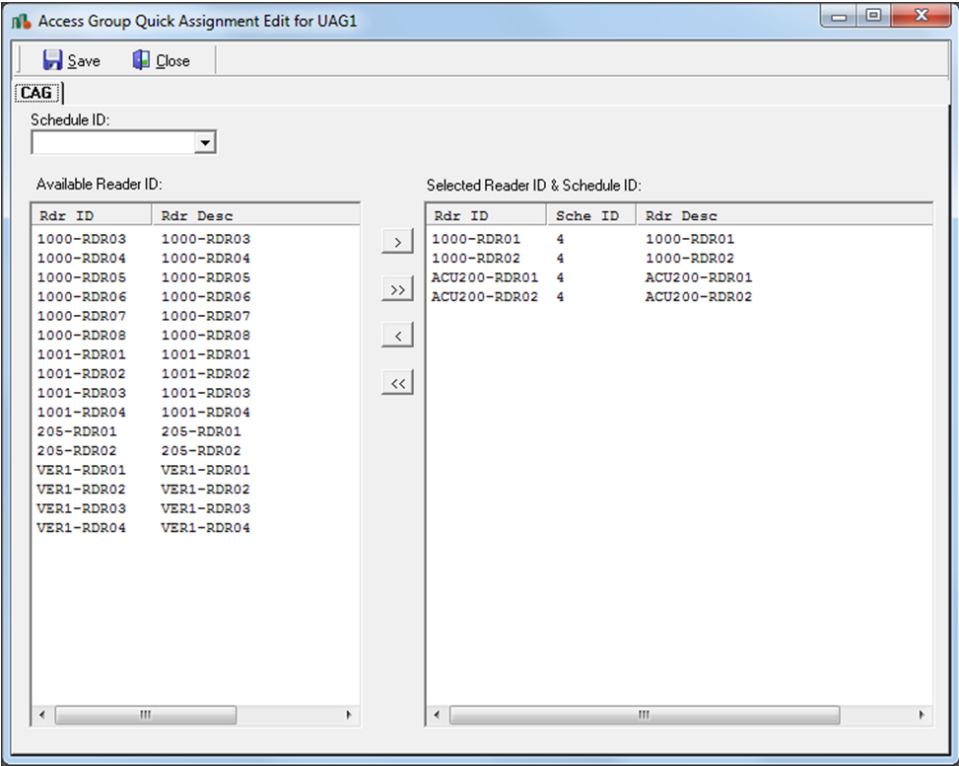


Program the Schedule in IBSS2000

Overview

Schedule play a big part in the whole hardware configure, many operation rely on it as time keeper. In the system there are up to 128 schedule depends on hardware models. Each schedule is partition into 7 days plus a holiday. In each days the 24hrs is divided into 4 slot of start and end. See where the schedule will be used.

User Access Group



Reader Configuration

Access System Reader Configuration Edit

Add Delete Update Save Download Close

Action Sequence

Basic Advanced Event Action

Reader Function	Access
Arm Mode	Arm
Disarm Schedule ID	
Door Unlock Timer (Sec)	5 [1..255]
Pre Alarm Timer (Sec)	10 [1..255]
DOTL Timer (Sec)	15 [1..255]
Exit Button Input #	1
Door Contact Input #	2
Door Lock Output #	1
Antipassback Mode	Disable
Entry/Exit Reader	Entry
Access Mode	CardOnly
PIN Schedule ID	
Number of Card(s)	1 [1..4]
Is Toggle Mode ?	

Input

ACU Input Configuration Edit

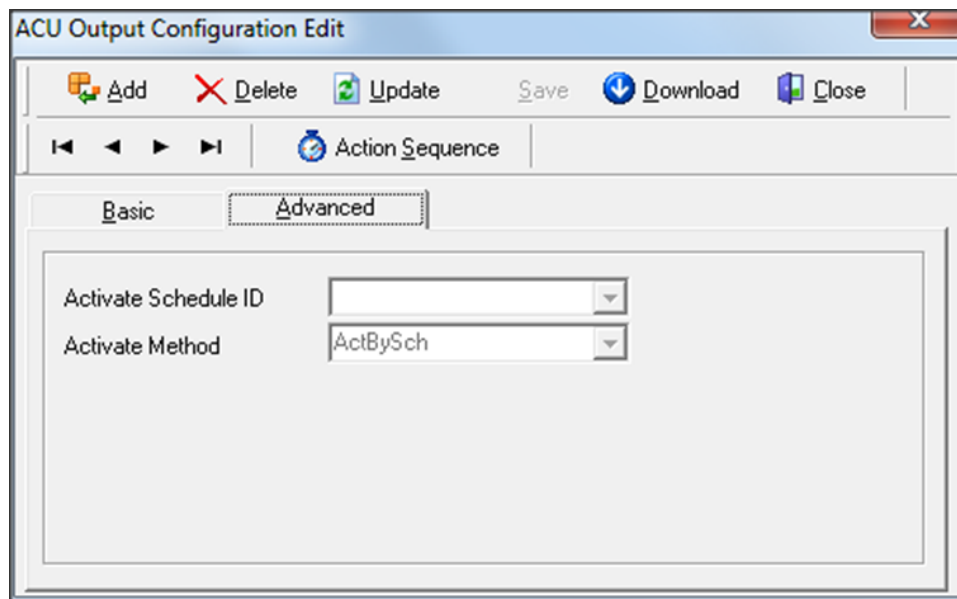
Add Delete Update Save Download Close

Action Sequence

Basic Advanced Event Action

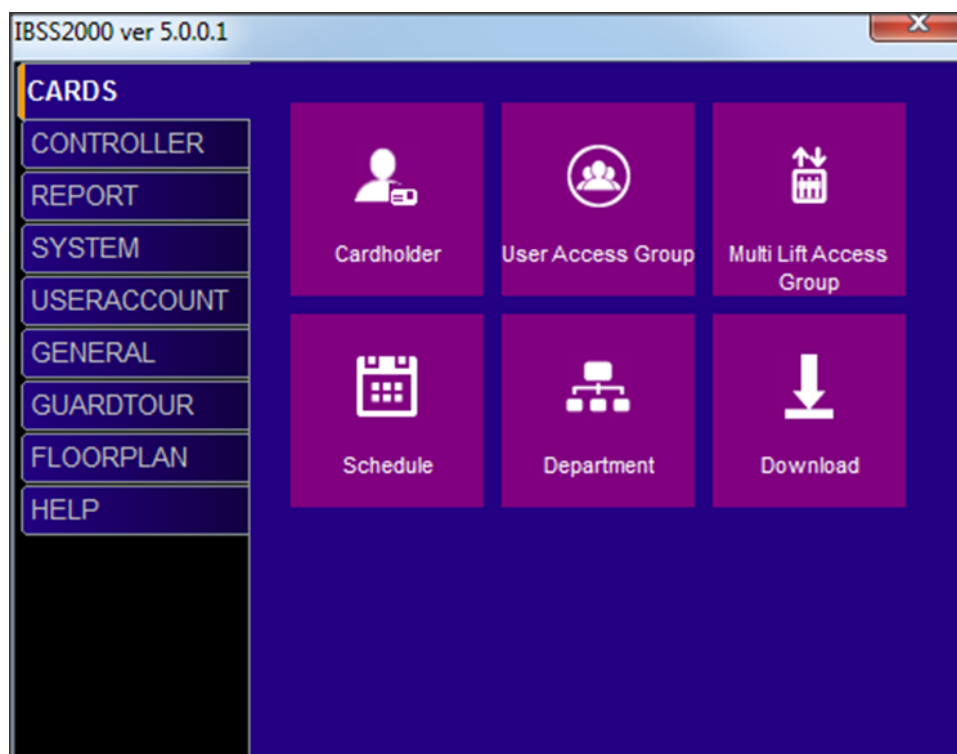
Arm Mode	Arm
Disarm Schedule ID	
Arm/Disarm Delay (Sec)	0 [0..255]

Output



Schedule Programming

In IBSS2000 Menu item CARDS Tab. Click on Schedule.



Schedule Edit

Find: Edit Master Save Close

SCHEDULEID	DESCRIPTION
1	0000-0000
2	0730-1800
3	0730-2359
4	0000-2359

	Start1	End1	Start2	End2	Start3	End3	Start4	End4
Monday	00:00	00:00	00:00	00:00	00:00	00:00	00:00	00:00
Tuesday	00:00	00:00	00:00	00:00	00:00	00:00	00:00	00:00
Wednesday	00:00	00:00	00:00	00:00	00:00	00:00	00:00	00:00
Thursday	00:00	00:00	00:00	00:00	00:00	00:00	00:00	00:00
Friday	00:00	00:00	00:00	00:00	00:00	00:00	00:00	00:00
Saturday	00:00	00:00	00:00	00:00	00:00	00:00	00:00	00:00
Sunday	00:00	00:00	00:00	00:00	00:00	00:00	00:00	00:00
Holiday	00:00	00:00	00:00	00:00	00:00	00:00	00:00	00:00

There are 4 default schedules, more can be added as per needed.

*Schedule 1 is prefix with Start 0000hrs, and End 0000, do not change this Schedule.

To add new Schedule, click Edit Master, then click Add.

Schedule Edit

Find: Edit Master Save Close

SCHEDULEID	DESCRIPTION
1	0000-0000
2	0730-1800
3	0730-2359
* 5	
4	0000-2359

	Start1	End1	Start2	End2	Start3	End3	Start4	End4
Monday	00:00	00:00	00:00	00:00	00:00	00:00	00:00	00:00

Schedule Definition Edit

Add Delete Update Save Download Cancel

Access Schedule Definition

Schedule ID: [1..64]

Description:

Key in Schedule ID and description and click save.

Edit Schedule by keying the timing in the box. Click saves after edit.

Example 1

[illegible]

Example 2

[illegible]

After schedule configuration is completed, downloading of configure to controller is required.

