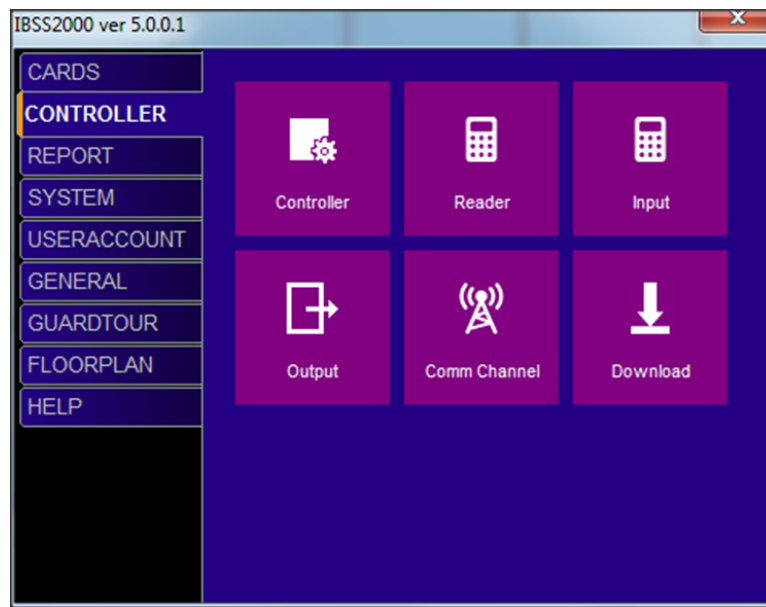


Add and Configure Commchannel in IBSS2000

Overview

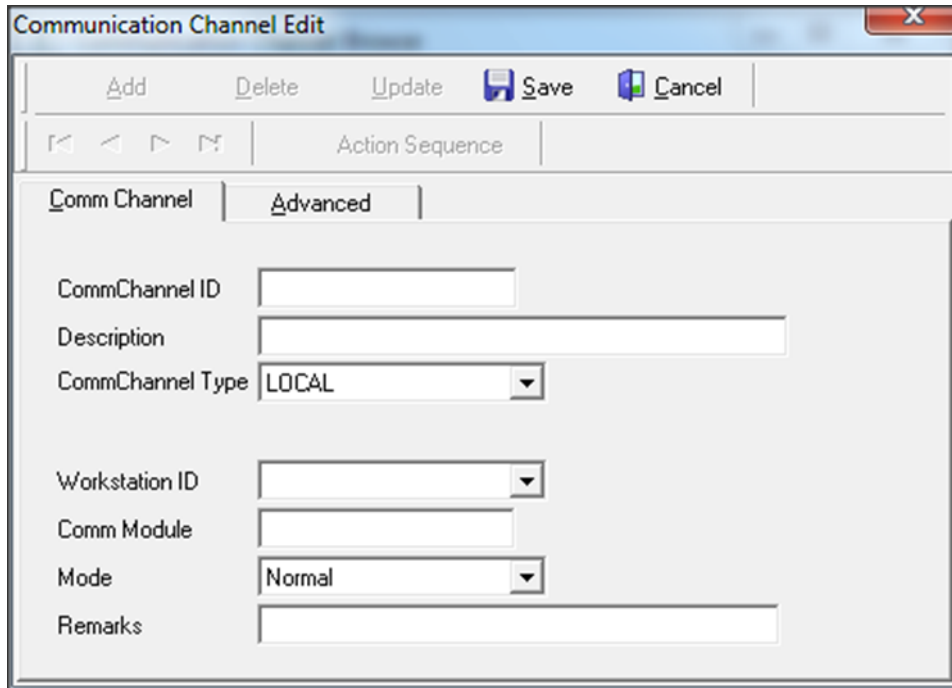
In IBSS2000

Controller Tab click on Controller tile.



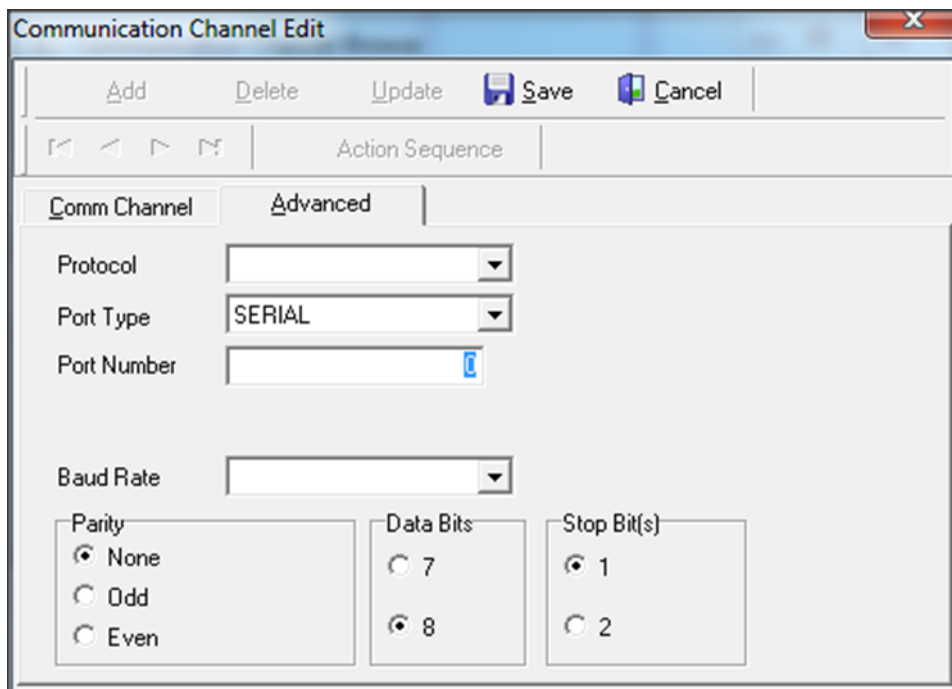
Add new Commchannel by entering following info in the table.

Controller Model	12 char alphanumeric
Description	Can be blank
Commchannel Type	Select Local only
Workstation ID	Select Commsvr1 only
Comm Module	Can be blank
Mode	Normal for Operation, Isolate to stop Comms
Remarks	Can be blank
Protocol	Select CAC only
Port Type	Select Serial or TCPIP
Port Number	Serial port number range between 1 to 35, TCPIP port number start from 36
IP address	The setup IP address for the controller
IP Port	Select 4001 only
Baud Rate	n/a



The 'Communication Channel Edit' dialog box is shown with the 'Comm Channel' tab selected. The 'Advanced' sub-tab is also visible. The dialog includes a toolbar with 'Add', 'Delete', 'Update', 'Save', and 'Cancel' buttons. Below the toolbar is an 'Action Sequence' section with navigation arrows. The main area contains the following fields:

- CommChannel ID: Text input field
- Description: Text input field
- CommChannel Type: Dropdown menu showing 'LOCAL'
- Workstation ID: Dropdown menu
- Comm Module: Text input field
- Mode: Dropdown menu showing 'Normal'
- Remarks: Text input field



The 'Communication Channel Edit' dialog box is shown with the 'Advanced' sub-tab selected. The dialog includes the same toolbar and 'Action Sequence' section as the previous image. The main area contains the following fields:

- Protocol: Dropdown menu
- Port Type: Dropdown menu showing 'SERIAL'
- Port Number: Text input field with a blue icon on the right
- Baud Rate: Dropdown menu
- Parity: Radio button group with 'None' selected, 'Odd', and 'Even' options
- Data Bits: Radio button group with '7' and '8' options, with '8' selected
- Stop Bit(s): Radio button group with '1' and '2' options, with '1' selected

Click Save

The save configuration need to be enable on the Commserver software before any configuration can be established. The process to enable communication is thru Commserver software. At Commserver click on Communication, Click Close Commchannel. Then click on Communication again, then click Initialize

Commchannel

