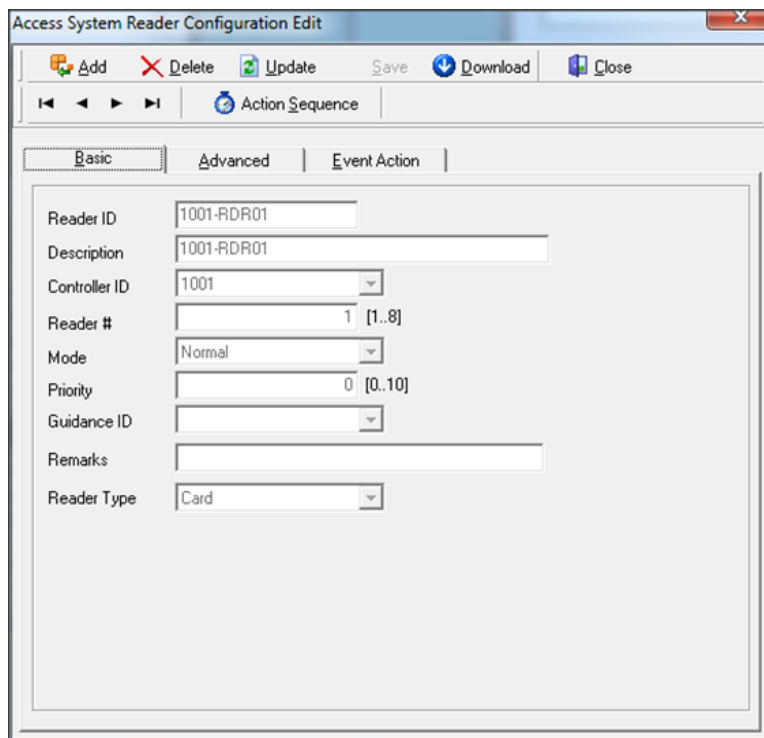
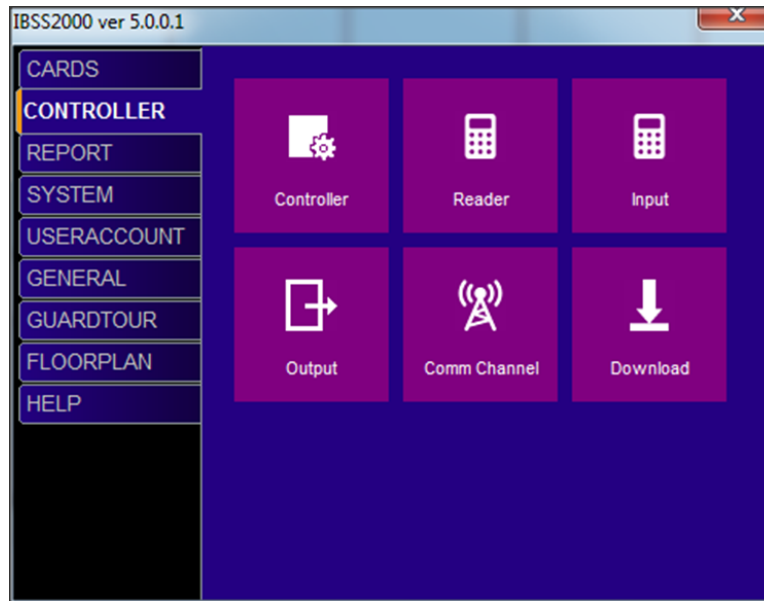


Configure Readers in IBSS2000

Overview

Readers are auto added when controller is added; by default no configuration is required. Some configuration can be done to change the functionality of the reader.



Reader Type change be change to support Bio metric readers. See SD00xx

Access System Reader Configuration Edit

Add Delete Update Save Download Close

Action Sequence

Basic **Advanced** Event Action

Reader Function	Access
Arm Mode	Arm
Disarm Schedule ID	
Door Unlock Timer (Sec)	5 [1..255]
Pre Alarm Timer (Sec)	10 [1..255]
DOTL Timer (Sec)	15 [1..255]
Exit Button Input #	1
Door Contact Input #	2
Door Lock Output #	1
Antipassback Mode	Disable
Entry/Exit Reader	Entry
Access Mode	Card&PIN
PIN Schedule ID	4
Number of Card(s)	1 [1..4]
Is Toggle Mode ?	

Arm Mode	Trigger alarm when input activate
Disarm Schedule ID	When Arm Mode set to Disarm By Schedule, it will follow the schedule ID selected here
Door Unlock Timer (Sec)	How long the relay remain deactivated after Granted Access
Pre Alarm Timer (Sec)	How long a door is allow to be remain open before audio alert is activated
DOTL Timer (Sec)	How long a door is allowed to be remain open before an alarm is generated
Exit Button Input #	Default value assigned, change only if the physical termination has to change
Door Contact Input #	Default value assigned, change only if the physical termination has to change
Door Lock Output #	Default value assigned, change only if the physical termination has to change
Anti-passback Mode	Off by default, set to hard or soft mode
Entry/Exit Reader	Set reader as Entry or Exit for Anti-passback
Access Mode	By default Reader operate in Card Only Mode, Set reader to operate in Card & Pin Mode
Pin Schedule ID	Set a schedule for Pin
Number of Card (s)	Default is 1, can set up to 4 cards present before door open
Is Toggle Mode ?	Yes or No, when set to yes Disarm Schedule must set to 24hrs disarm mode