

Configure Input in IBSS2000

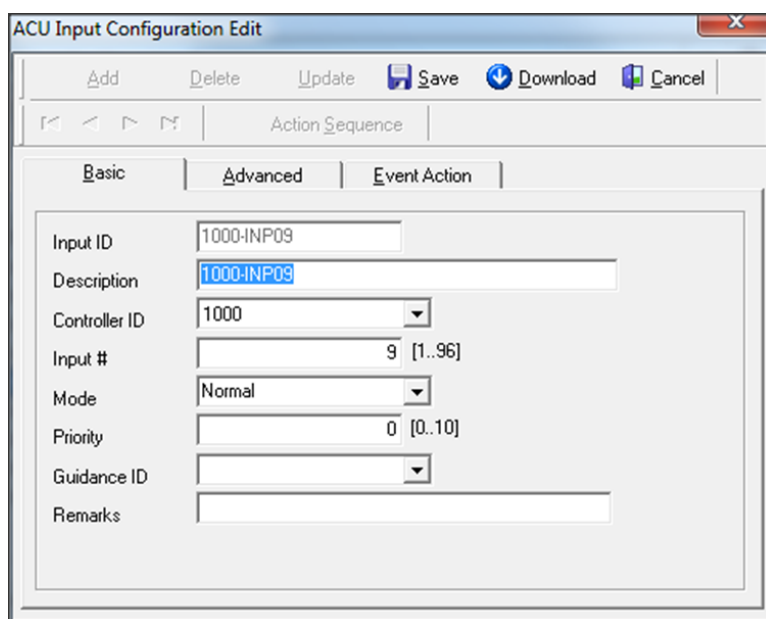
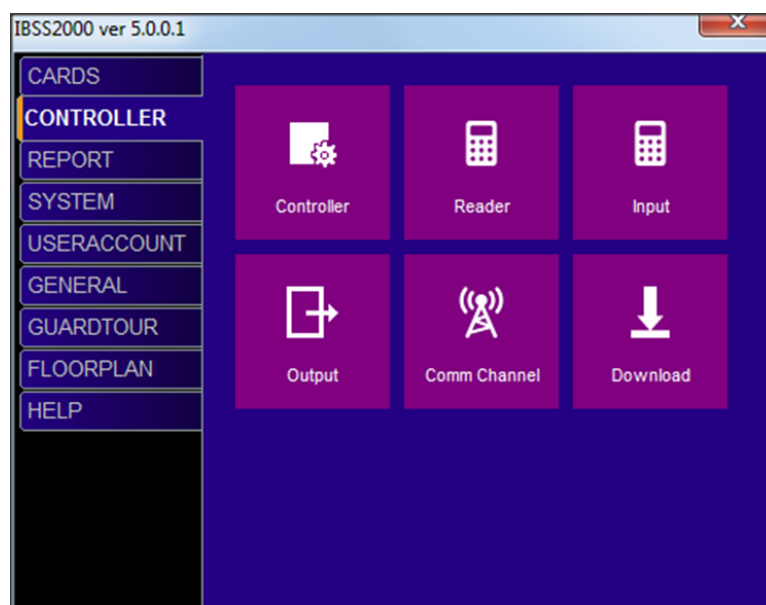
Overview

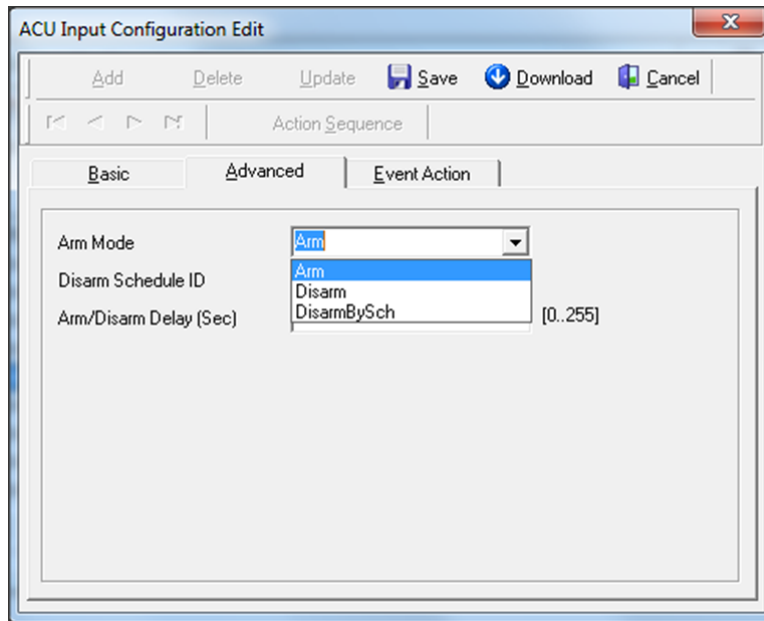
ACU1000 mainboard plus reader board plus 2 x EM02 add up to total of 96 input detection zone.

16 of the input detection zone are reserve for 8 reader's zone. The remaining 80 input zone can be configuring to monitor any device that provides a dry contact normally close input.

Input zone are auto added when controller is added; by default no configuration is required.

Some configuration can be done to change the monitor behavior of the input zone.





Arm Mode

Arm	Trigger alarm when input activate
Disarm	No monitoring
Disarm by Schedule	Only monitor in schedule time. Must configure Disarm Schedule ID
Arm/Disarm Delay (Sec)	Delay arming timing by second after input activate