

Configure Output in IBSS2000

Overview

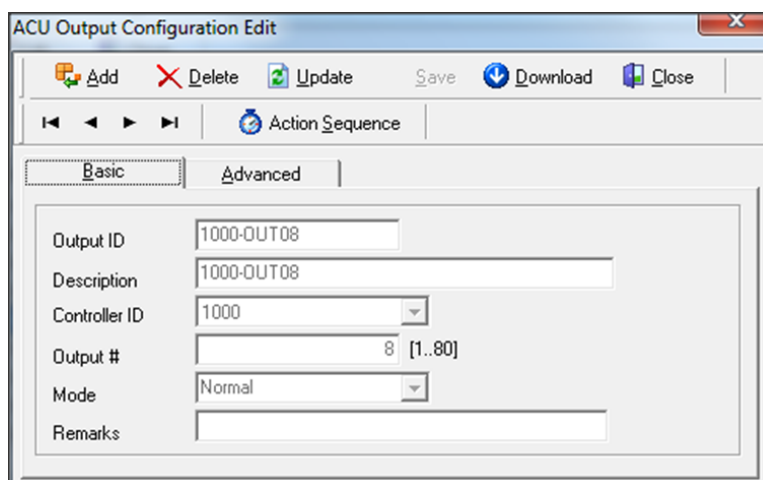
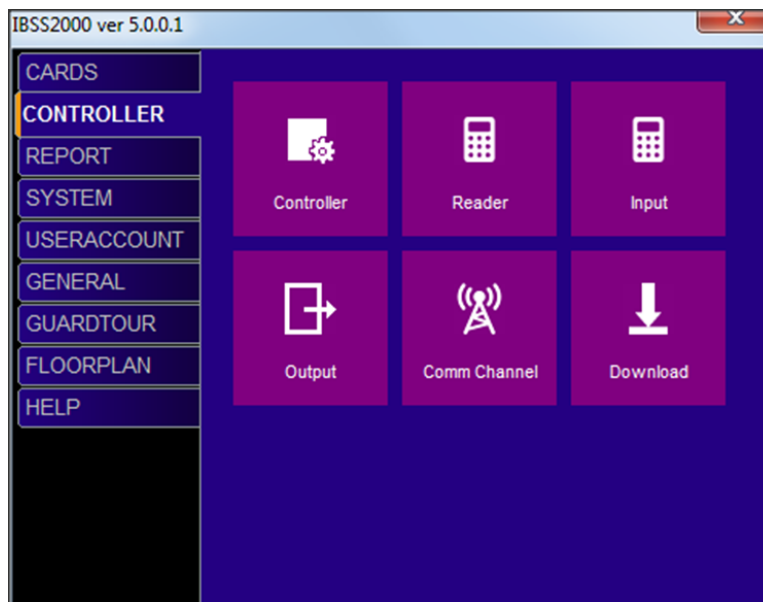
ACU1000 mainboard plus reader board plus 2 x EM03 add up to total of 80 output relay zone.

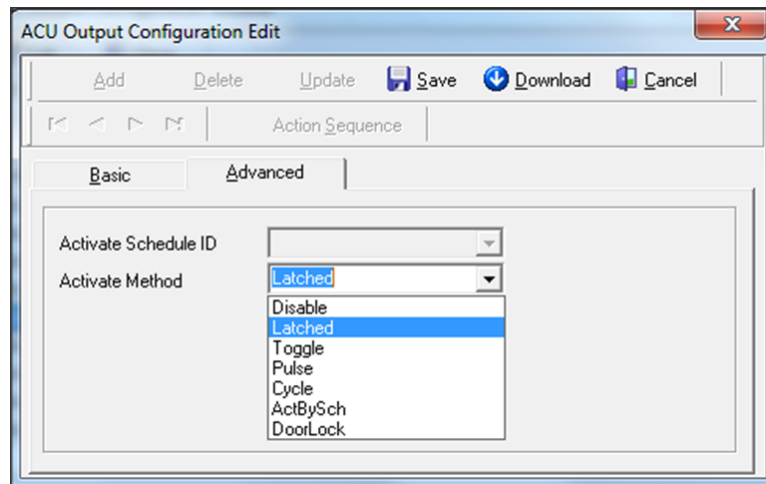
8 of the output relay zone are reserve for 8 reader's zone. The remaining 72 output zone can be used for door locking, switch output, etc.

Output zone are auto added when controller is added; by default no configuration is required.

Output zone can be toggle on and off via Online Control from IBSS software.

Some configuration can be done to change the trigger behavior of the output zone.





Activate Method

Disable	Output not in use
Latched	Output can be activate via online control
Toggle	Output will switch between on and off
Pulse	Set Pulse Duration to activate output timing
Cycle	Output turn on and off based on timing
ActBySch	Output activation based on schedule timing need to set Activate Schedule ID
DoorLock	Reserve for Card Access Reader

