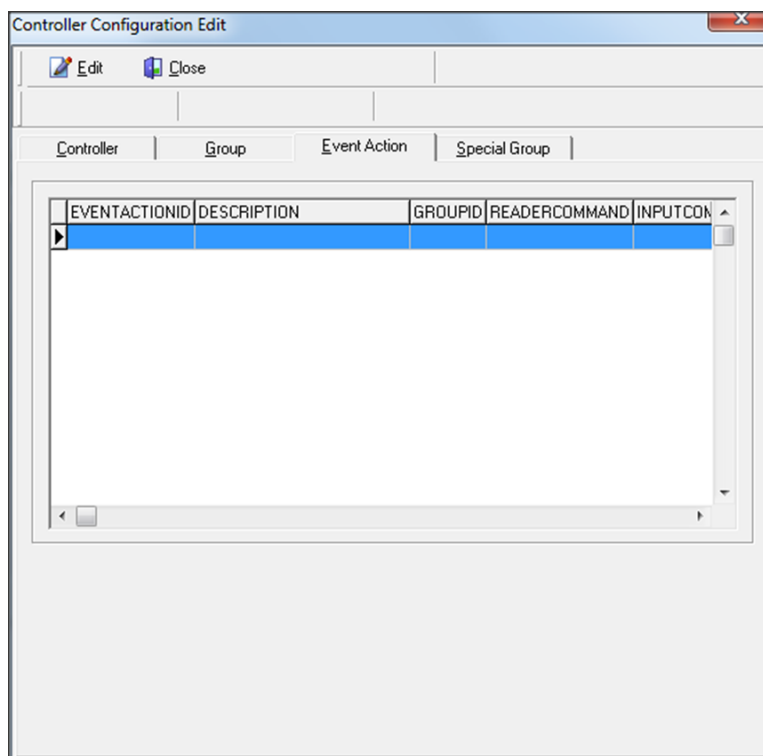
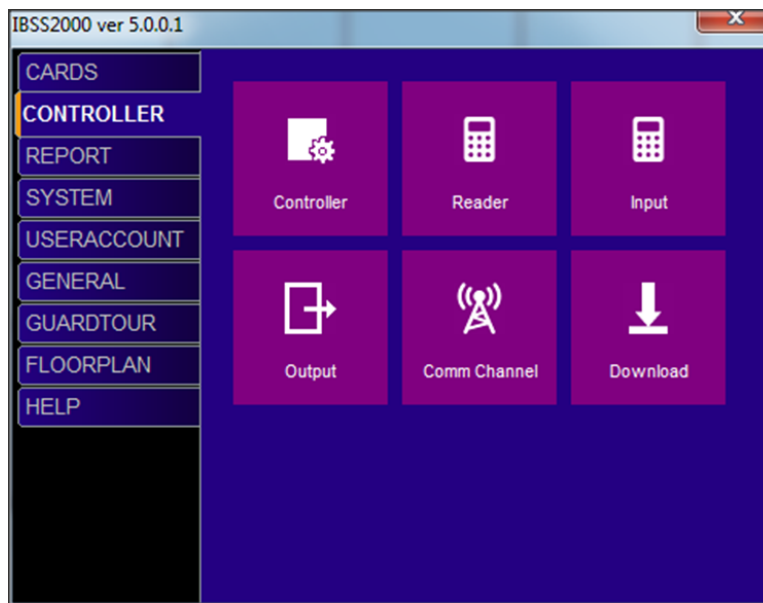


Configure Event Action and Group in IBSS2000

Overview

Event Action is an intrusion detection functionality build inside ACU series controller. When an intrusion is detected, an action can be triggered to prevent further intrusion. Event Action is a localize features so each controller need its own configuration.



Configure the command to trigger the target.

ACU Event Action Edit

Add Delete Update Save Download Close

Event Action

Event Action ID

Description

Group ID

Reader Command

Input Command

Output Command

Send Host Event ☐

Send Terminal Event ☐

Event Action ID	Digit start from 1
Description	Can be blank
Group ID	Based on group create
Reader Command	Command use for reader
Input Command	Command user for input
Output Command	Command use for output

Reader Command	Arm – set reader to arm Unlock – set reader to unlock Lock – set reader to lock GrantAccess - send grant access command to reader Isolate – set reader mode to isolate Normal – set reader mode to Normal Disarm – set reader to disarm
Input Command	Arm – Disarm – Isolate – Normal -
Output Command	Activate – Deactivate – Isolate – Normal –

ACU Event Action Edit

Add Delete Update Save Download Cancel

Event Action

Event Action ID

Description

Group ID

Reader Command

Input Command

Output Command

Send Host Event

Send Terminal Event ☐

Arm
Unlock
Lock
GrantAccess
Isolate
Normal
Disarm

ACU Event Action Edit

Add Delete Update Save Download Cancel

Event Action

Event Action ID

Description

Group ID

Reader Command

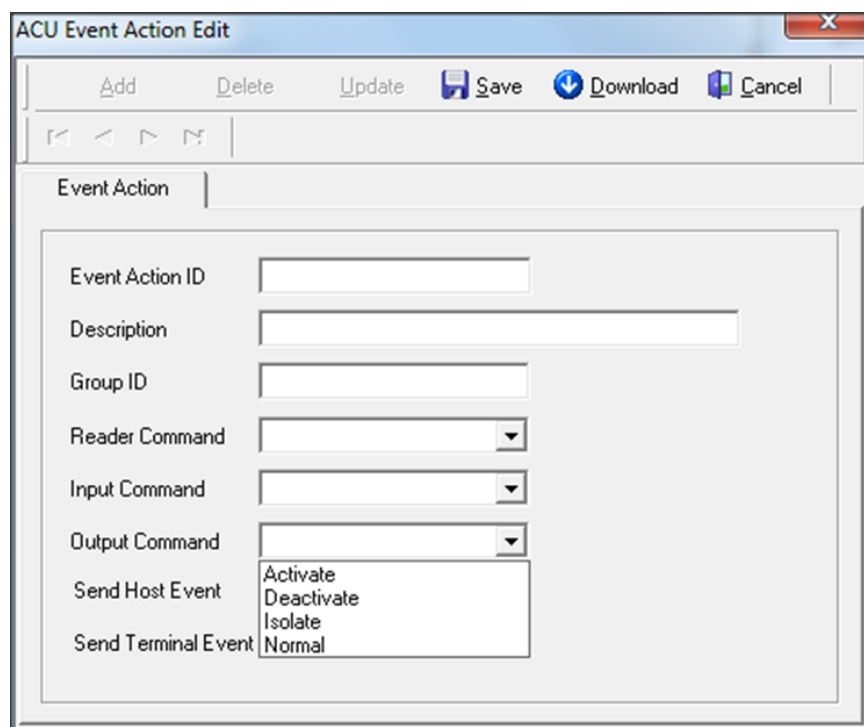
Input Command

Output Command

Send Host Event

Send Terminal Event ☐

Arm
Disarm
Isolate
Normal



ACU Event Action Edit

Add Delete Update Save Download Cancel

Event Action

Event Action ID:

Description:

Group ID:

Reader Command:

Input Command:

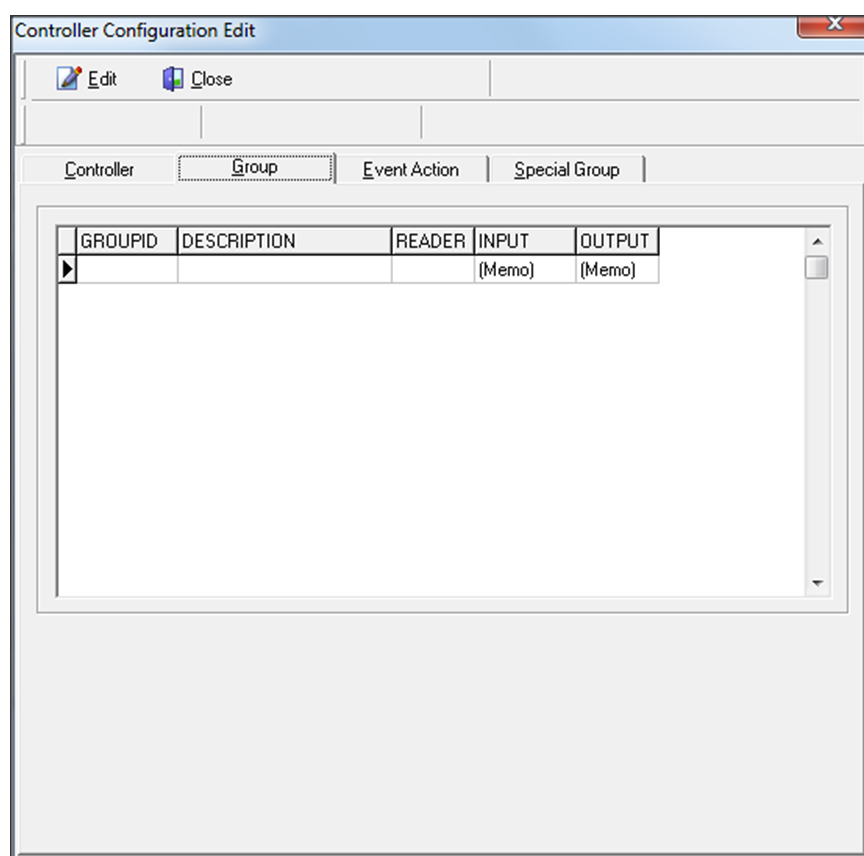
Output Command:

Send Host Event:

Send Terminal Event:

Activate
Deactivate
Isolate
Normal

Configure the target.

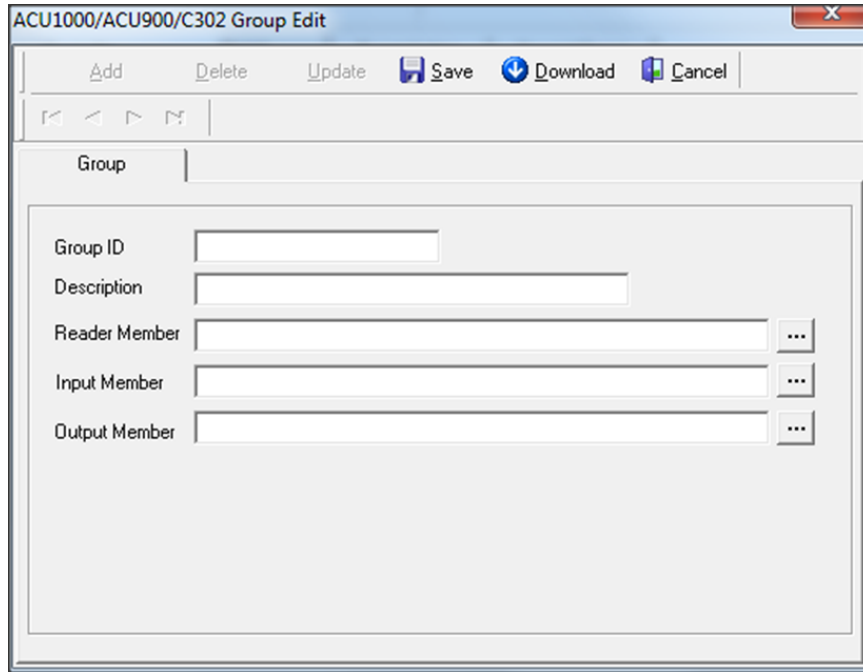


Controller Configuration Edit

Edit Close

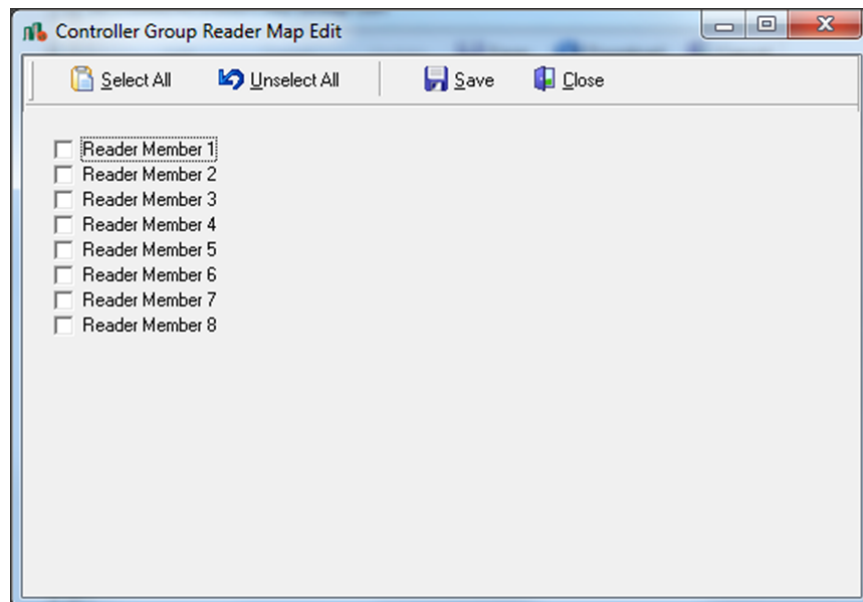
Controller Group Event Action Special Group

GROUPID	DESCRIPTION	READER	INPUT	OUTPUT
			(Memo)	(Memo)

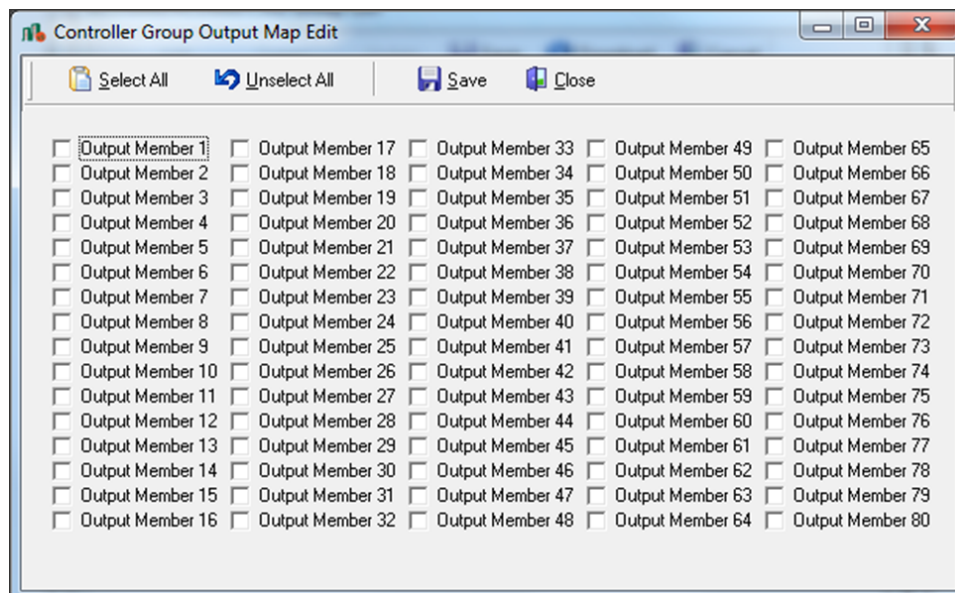
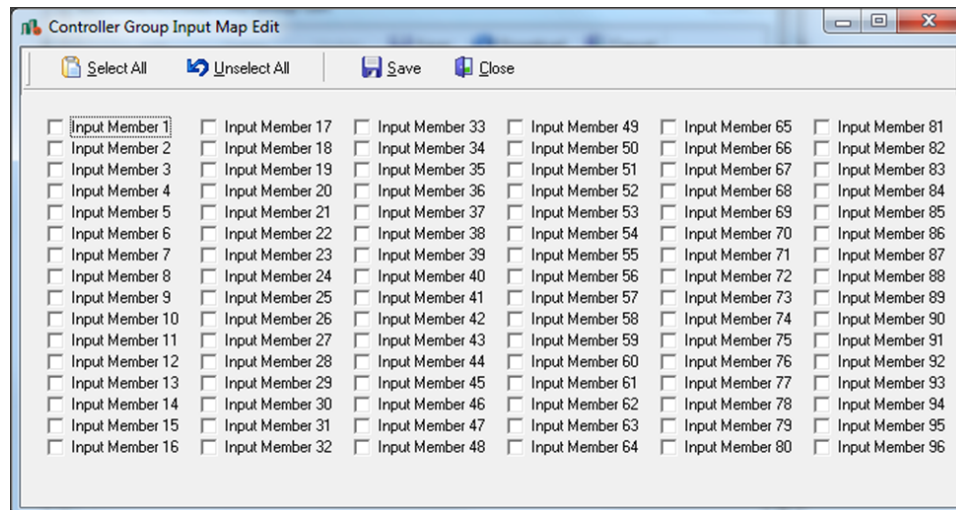


The dialog box is titled "ACU1000/ACU900/C302 Group Edit". It features a toolbar with buttons for "Add", "Delete", "Update", "Save", "Download", and "Cancel". Below the toolbar is a "Group" tab. The main area contains five input fields: "Group ID", "Description", "Reader Member", "Input Member", and "Output Member". Each of the last three fields has a small "..." button to its right, indicating a selection dialog.

Group ID	Digit start from 1
Description	Can be blank
Reader Member	Group of reader
Input Member	Group of input
Output Member	Group of output



The dialog box is titled "Controller Group Reader Map Edit". It features a toolbar with buttons for "Select All", "Unselect All", "Save", and "Close". The main area contains a list of eight checkboxes, each followed by a label: "Reader Member 1", "Reader Member 2", "Reader Member 3", "Reader Member 4", "Reader Member 5", "Reader Member 6", "Reader Member 7", and "Reader Member 8".



Assign the source

The source is all potential intrusion point, like readers and input.

Access System Reader Configuration Edit

Add Delete Update Save Download Close

Action Sequence

Basic Advanced Event Action

Access Grant	
Access Denied	
Guard Tour	
Engineer	
VIP	
Management	
DOTL	
Door Forced Open	
DOTL Restore Action	
Forced Open Restore Action	

ACU Input Configuration Edit

Add Delete Update Save Download Cancel

Action Sequence

Basic Advanced Event Action

Alarm Activated	
Restored	
Fault	