

# Configure the Action Sequence in IBSS2000

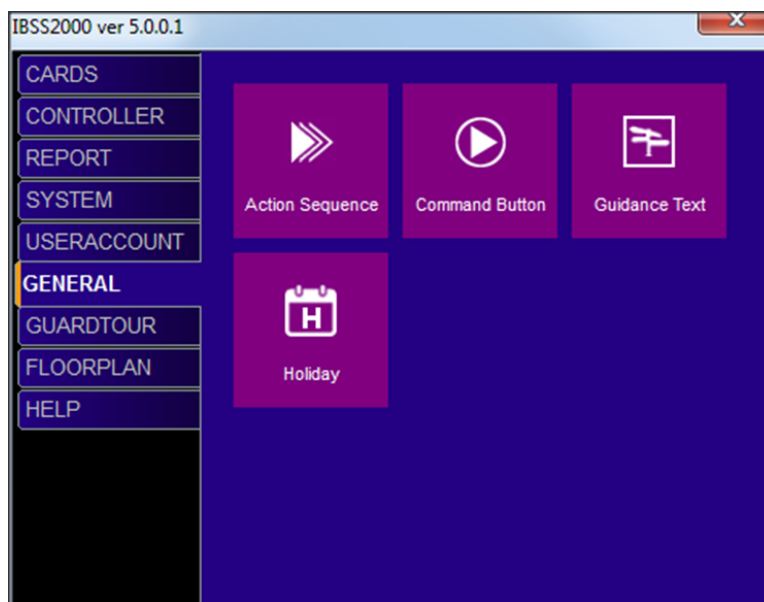
## Overview

Action sequence is a feature of Asis Integrated Security that performs in real time reacting to detected security threats. A typical scenario will be perimeter fencing motion detector activated, interior door will be arm and lock down to prevent further intrusion.

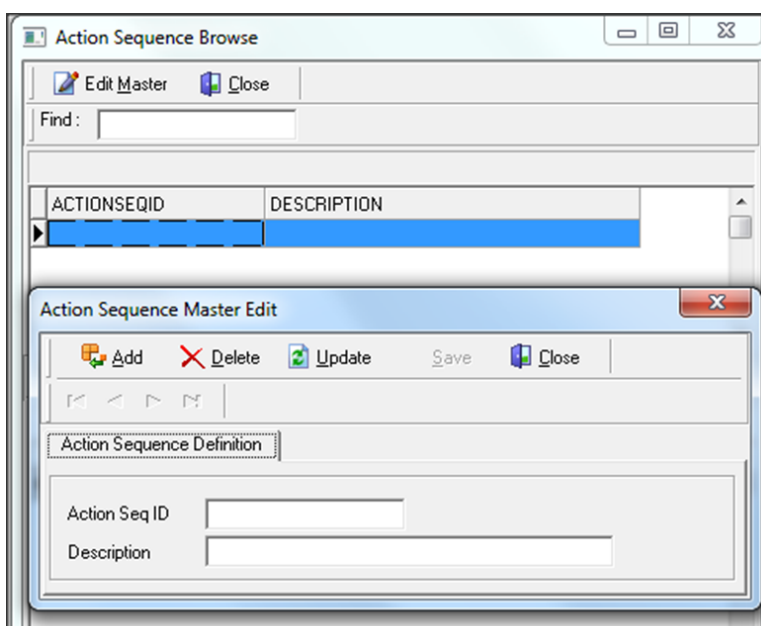
When configure Action Sequence we need to identify the target and the source. Target will be the interior door in the above scenario; Source will be motion detector at perimeter fencing.

And the configuration will always start with target.

In IBSS2000 Menu item General Tab. Click on Action Sequence.



Click on Edit Master and click Add

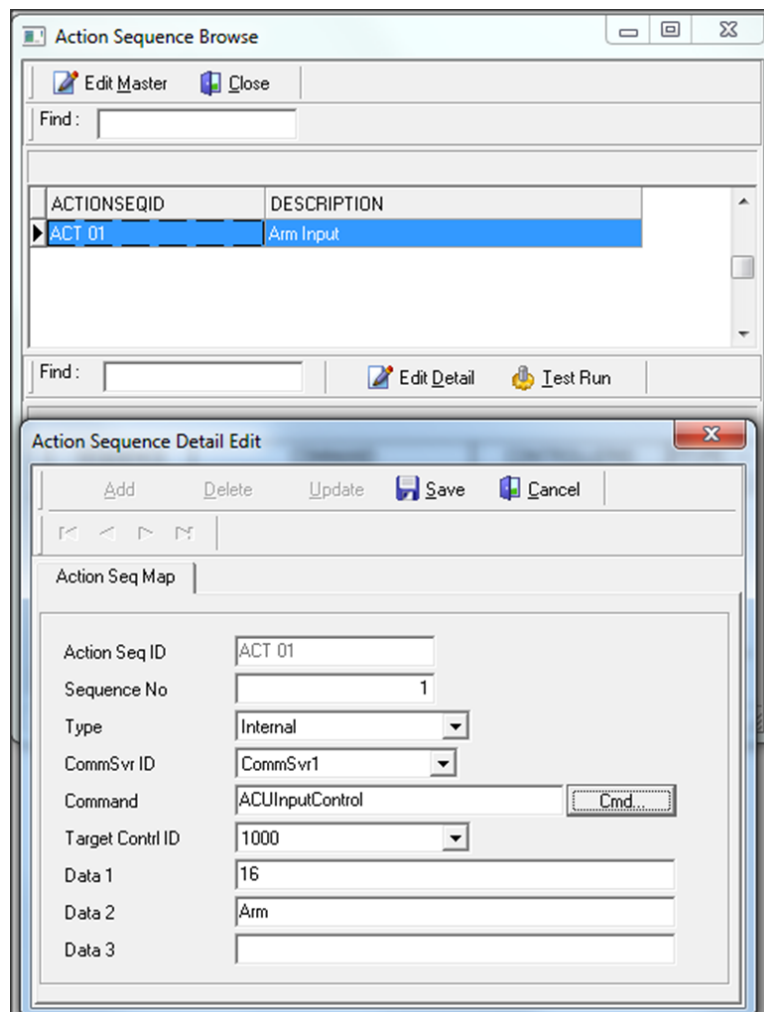


## Cardholder Configuration

Action Sequence	12 Character alphanumeric will appears for selection
Description	Describe the Action Sequence

Click Save after complete.

Click on Edit detail and click add, fill in reference to table below.

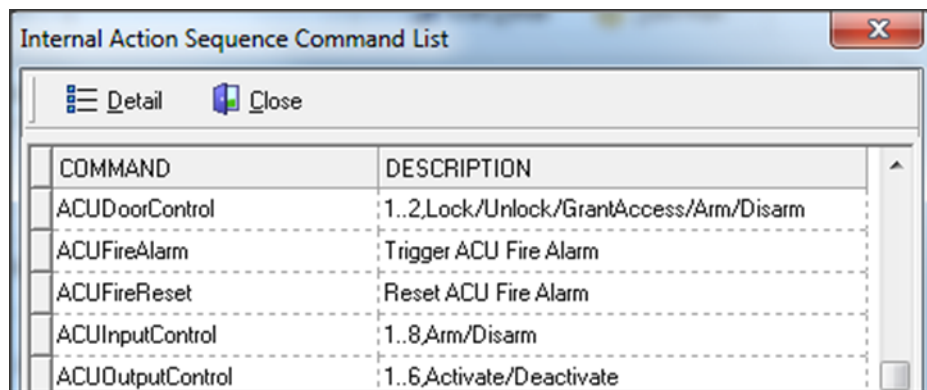


## Cardholder Configuration

Sequence	Start from 1 can have multiple sequence per Action Sequence
Type	Choose Internal
CommSvr ID	Choose CommSvr1
Command	Click Cmd button and choose appropriate Command from the list. See Command List below
Target Contrl ID	Select target Controller from database list
Data 1	Key in target zone
Data 2	Key in Command
Data 3	n/a

Save the Action Sequence.

Command List

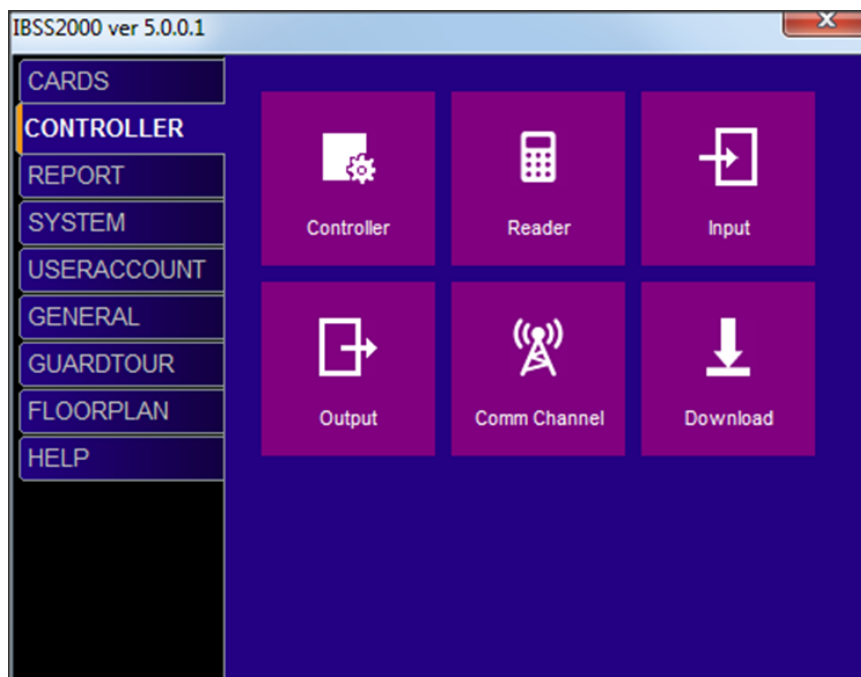


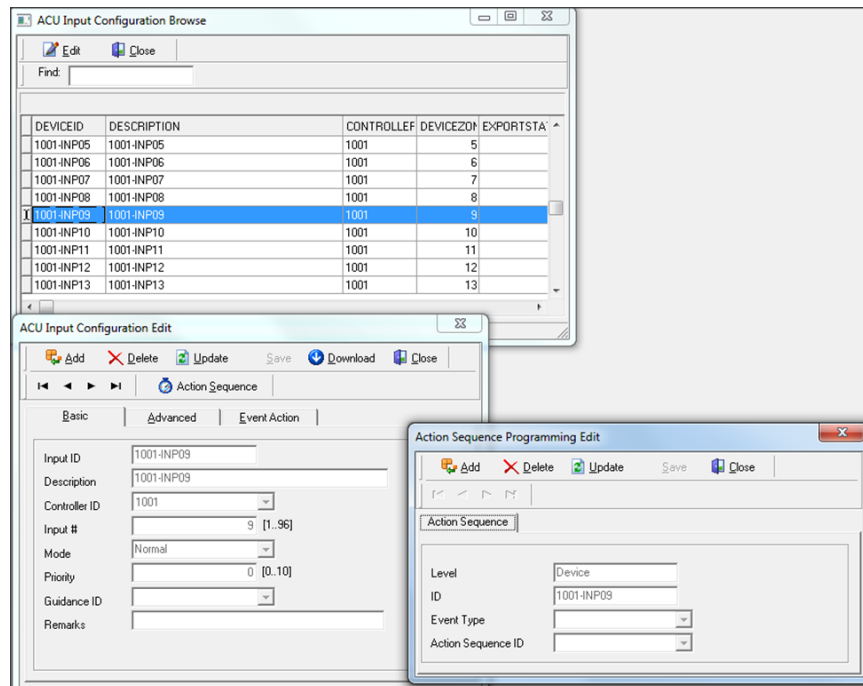
The screenshot shows a window titled "Internal Action Sequence Command List" with a close button (X) in the top right corner. Below the title bar is a toolbar with "Detail" and "Close" buttons. The main area contains a table with two columns: "COMMAND" and "DESCRIPTION".

COMMAND	DESCRIPTION
ACUDoorControl	1..2,Lock/Unlock/GrantAccess/Arm/Disarm
ACUFireAlarm	Trigger ACU Fire Alarm
ACUFireReset	Reset ACU Fire Alarm
ACUInputControl	1..8,Arm/Disarm
ACUOutputControl	1..6,Activate/Deactivate

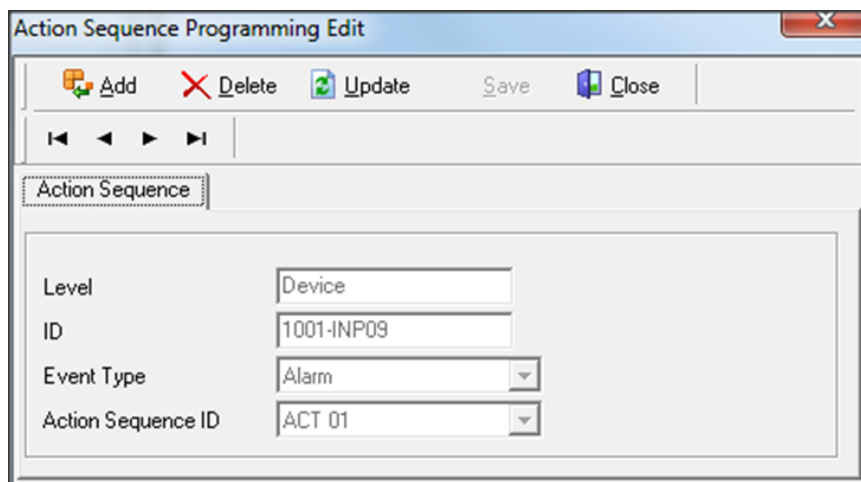
Next configure the Source

In IBSS2000 Menu item Controller Tab. Click on Input, double click for the source input, click on Action Sequence button





Choose Alarm from Drop Down list of Event Type and select the created target ACT 01 and click Save.



Action Sequence work in real time, meaning Commsvr need to be online for Action Sequence to function.