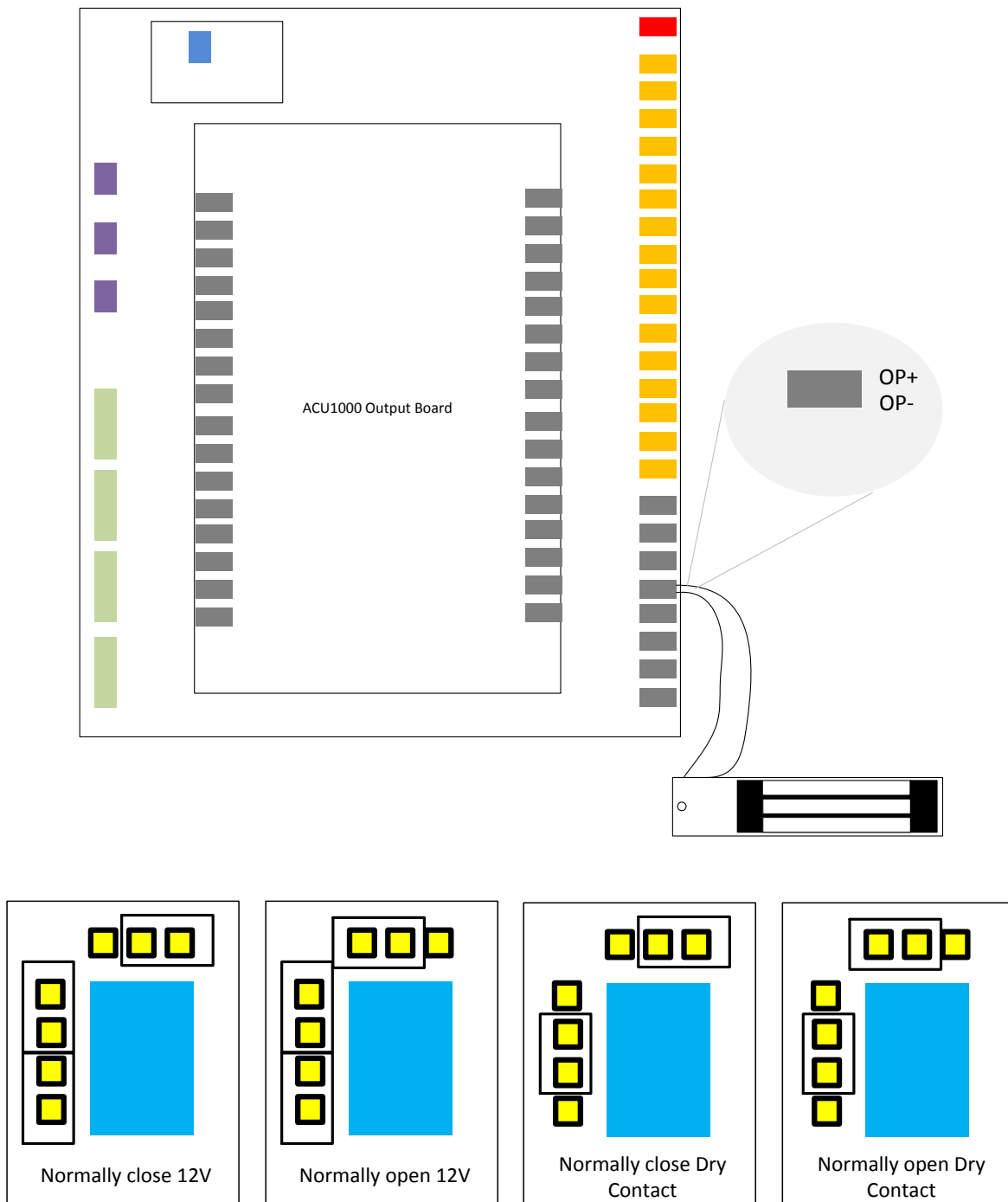


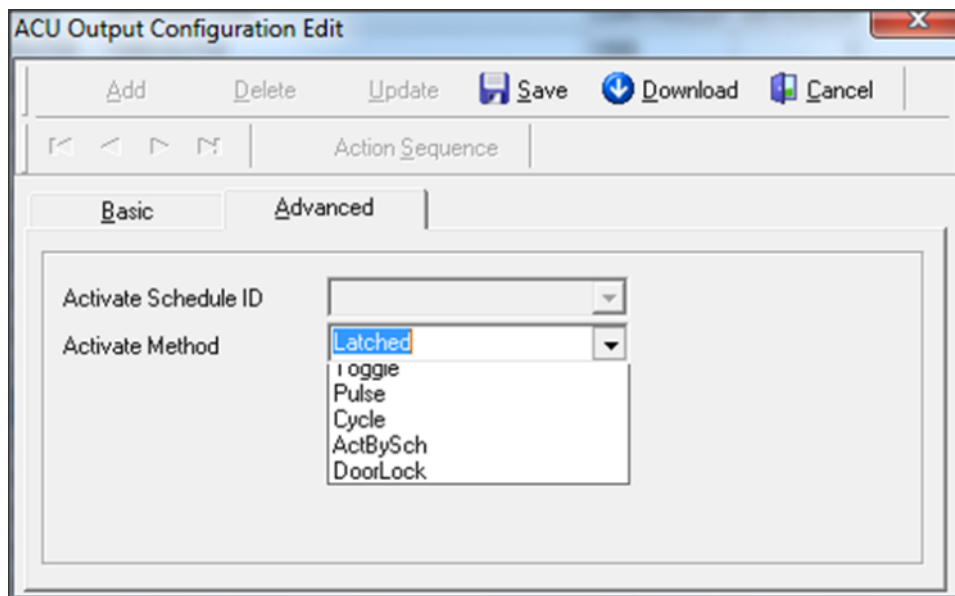
Using Spare Output Point for Door Locking

Overview

In ACU series controller, main board and reader board comes with total spare 8 output points. When add in the EM03 output board there are another 64 and total 72 spare output point. All this output point can be wired to output devices and make triggered by controller based on schedule, by event action, action sequence or by manual online controller. One of the typical applications will be to use space output point for door locking.



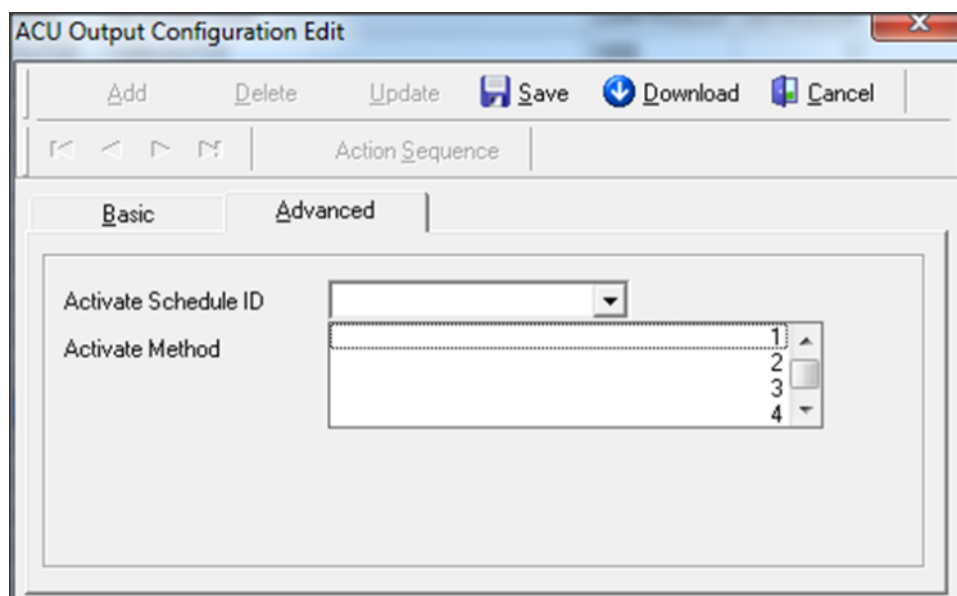
When using for door locking, the output point is configure to be ActBySchedule or Latched.
(Configuration done in IBSS2000)



When use in Latched the door can only be unlock by Online Control.

When use in ActBySchedule the door can be unlock by schedule and Online Control.

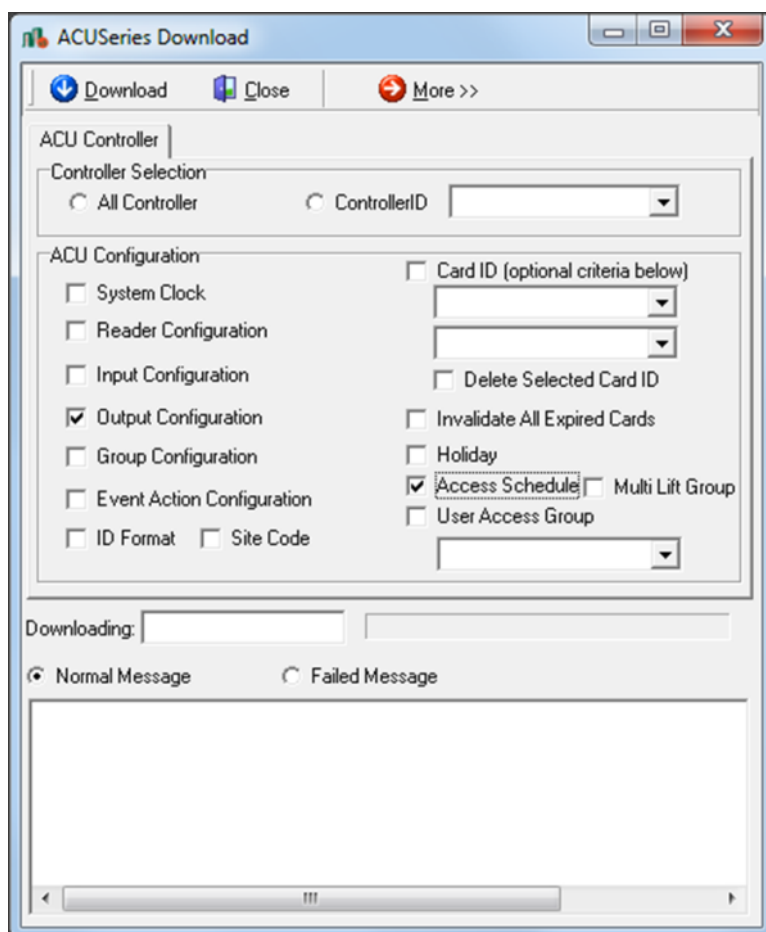
Schedule ID must be selected from dropdown list if using ActBySchedule.



In this configuration the output is attached to lock door but there is no monitoring input so when the door is unlock the system will not be notify.

To monitor the door a door sensor must be installed and wired to an input point.

All configurations must be download to controller for the configuration to take action.



Related document SD0033