

ACU1000 Four/ Eight Door Access Controller

The **ACU1000** is an intelligent, multi door controller suited for enterprise security. Its modular architecture and plug-n-play design makes it truly versatile. The **ACU1000** can be used for door access, lift access and car park system. With advanced on board networking, the **ACU1000** is the ideal solution for Ethernet LAN/ WAN connectivity.

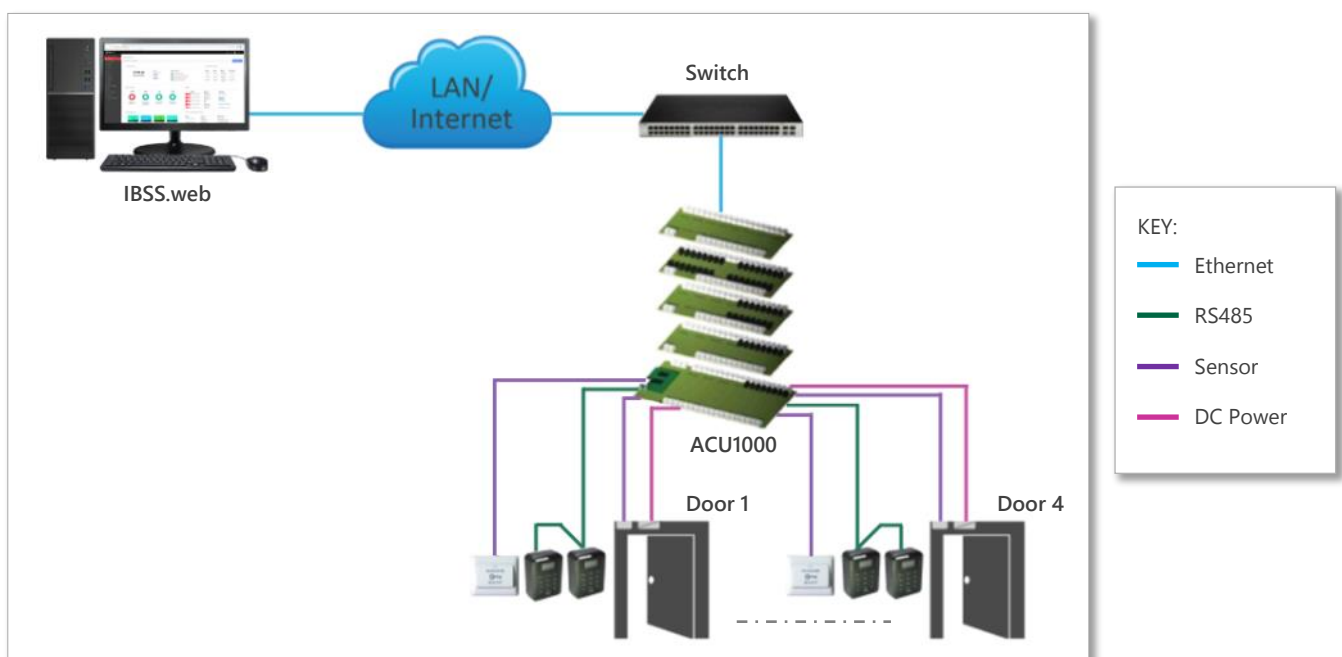
Fully scalable, the **ACU1000** can operate as a standalone unit or with full networking of up to 2,048 access control readers and 45,000 input/output points.



Key Features

- Support TCP/IP protocol and RS485 network communication between controller and software
- Detection automatic for each additional module with plug-able connectors, without software changes
- Modular 4 reader boards with up to 176 input/output points
- Modular 10A power supply unit with battery backup and automatic switchover
- Built-in lighting/surge protection circuits
- Supervised alarm input for open circuit and short circuit detection
- Flash memory design for easy controller software upgrade
- Support standard Wiegand format and RS485 interface for proximity, biometric & MIFARE readers
- 100,000 cardholders and 200,000 events
- Highly expandable from standalone unit up to 2048 access control reader and 45,000 input/output points
- Multiple access groups (4 x 2048)
- Interface to advanced Windows based user-friendly GUI software (IBSS2000) and browser-based IBSS.web
- Supports 4 byte/ 8 byte Card ID (via RS485)
- Supports up to 64 bit Card ID

Schematic Diagram



ACU1000 Four/ Eight Door Access Controller

Technical Specifications

Specification*	ACU1000MM	ACU1000EM01	ACU1000EM02	ACU1000EM03
Description	Main 4 door controller with 16 input/ 8 output	Auxiliary 4 door controller with 16 input/ 8 output	32 Input Board	32 Output Board
Reader Type	Proximity in Wiegand/ Contactless smartcard/ Biometric in RS485		-	-
Card Holders	100,000	-	-	-
Event Buffer	200,000	-	-	-
Input Type	Supervised/Non-supervised			-
Output Type	NC/NO/12VDC 1A		-	NC/NO/12VDC 1A
LED Indicator	Green/Red			
Communication Interface	TCPIP, RS485 (Host) & RS232 (Terminal)	RS485 (Dev Link)		
Communication Speed	9,600 bps	9,600 bps	9,600 bps	9,600 bps
Reader Interface	4 units	4 units	-	-
Schedules	64 max	-	-	-
Multi Lift Group	255 max	-	-	-
Access Modes	Card Only, Card + PIN		-	-
DC Input	12 VDC			
AC Input	110/230 VAC 50Hz 1A			
DC Power Supply Unit	13.8 VDC 10A Switch mode			
Battery Backup	12 VDC 12AH sealed lead acid			
Modules	ACU1000MM + up to 3 modules (EM01/EM02/ EM03)			
Board Size (H x W)	285 x 155 mm	225 x 100 mm		
Enclosure Dimensions (H x W x D)	390 x 330 x 130 mm			
Weight	8000 g (without battery) / 11000 g (with battery)			
Operating Temperature	-20°C to 60°C			

*Specifications are subject to change without prior notice

Ordering Information

Model No.	Description
ACU1000MM	1000MM ACU1000 Controller Module
ACU1000EM01	EM01 ACU1000 Controller Module
ACU1000EM02	EM02 ACU1000 32-Input Module
ACU1000EM03	EM03 ACU1000 32-Relay Module
ACU1000S1	ACU1000 Controller Package 1 (up to 4 readers)
ACU1000S2	ACU1000 Controller Package 2 (up to 8 readers)

Accessories

ACU1000EPB	ACU1000 Metal Closure
AET300	AET300 Wall Mount Metal Enclosure
APC-155	10.5A PSU/ Charger 12VDC Output
ABT12AH	12V 12AH Lead Acid Battery